

Eden

Blackout fabric

Roller and
louvre blackout fabric
collection for public
and corporate use.

- 30 colours
- Colour matching
coated backing
- Superior blackout
qualities
- Fire retardant

eden blackout

shading efficiency

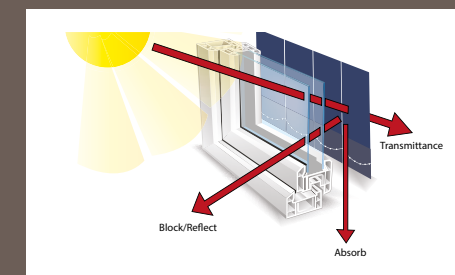
Transmittance is the amount of light and heat transmitted beyond the fabric. The lower the amount, the greater the efficiency.

Block/reflect is the amount of heat and light that is blocked or reflected. The higher the amount, the greater the efficiency.

Absorption is the amount of heat and light absorbed in the fabric. The higher the amount, the lower the efficiency.

Ultraviolet protection illustrates how protective the fabric is against ultraviolet rays. The higher the amount, the greater the effectiveness.

Shading Co-efficiency is tested using a single 6mm glass glazing system with and without a blind to obtain solar heat gain measurements. The heat gained with a blind at the window is divided by the solar heat gained without a blind at the window, giving the Shading Co-Efficient. The lower the result the better the performance of the blind at blocking solar heat.



OEKO-TEX®
CONFIDENCE IN TEXTILES
STANDARD 100
13.HTR.23374 HOHENSTEIN HTTI

	2500 / 3000 mm	2000 mm	127mm / 89 mm	Heat Transmittance %	Light Transmittance %	Shading Co-efficiency	Light Reflection %	Sun Block & UV Protection %	Absorption %	Heat Reflection %
Frost				0	0	0.30	85	100	25	75
Sesame				0	0	0.34	77	100	31	69
Vanilla				0	0	0.35	69	100	33	67
W. Almond				0	0	0.34	74	100	31	69
Taupe				0	0	0.51	32	100	59	41
Chocolate				0	0	0.66	14	100	85	15
Plum				0	0	0.49	12	100	55	45
Lilac				0	0	0.43	32	100	46	54
Dusty Pink				0	0	0.42	47	100	44	56
Rose				0	0	0.37	62	100	36	64
Pink				0	0	0.42	28	100	45	55
Berry				0	0	0.61	11	100	76	24
Scarlet				0	0	0.46	18	100	52	48
Tangerine				0	0	0.45	29	100	50	50
Sunshine				0	0	0.39	70	100	40	60
Primrose				0	0	0.35	76	100	33	67
Apple				0	0	0.41	62	100	43	57
Marsh				0	0	0.52	25	100	61	39
Pine Green				0	0	0.55	14	100	66	34
Dark Azure				0	0	0.70	7	100	90	10
Cobalt				0	0	0.60	11	100	74	26
Turquoise				0	0	0.50	27	100	58	42
Marine				0	0	0.59	21	100	72	28
Surf				0	0	0.39	52	100	40	60
Ash				0	0	0.38	56	100	39	61
Stone Grey				0	0	0.49	49	100	56	44
Fossil Grey				0	0	0.59	31	100	72	28
Graphite				0	0	0.62	24	100	78	22
Steel				0	0	0.69	13	100	88	12
Coal				0	0	0.72	7	100	93	7

eden blackout

Eden blackout is a stylish fabric with a colour matching acrylic foam coated backing that offers a large range of choice in terms of colour and size. With 30 colours to choose from, this fabric provides superior blackout qualities that will cast any room into darkness. It is fire retardant, odourless and colour fast, with 11 colours available in additional widths and a further 10 available with a white back option. As with all Yewdale fabrics, Eden blackout fabric comes with a lifetime warranty. This fabric has a colour matched back as standard, helping to maintain continuity across spaces that require different yet coherent levels of shading.

- Fabric Composition:

Fabric Range:

Louvre Widths:

Louvre Roll Length:

Roller Fabric Width:

Roller Fabric Length:

Fabric Thickness:

Fabric Weight:

Fire Retardancy:

Shading:

Moisture Resistance:

Colourfast:

Care Instructions:

Options:
- 100% Polyester

30

127mm

89mm

100m

2000mm/

2500/3000mm

30m

0.48mm

390 g/m²

Conforms to BS5867, Part 2: Type B 2008 Blackout. Suitable for computer environments

Suitable for moist conditions

Conforms to BS5867 – 1: 2004 for lightfastness when tested in accordance with ISO 105-B02:1999

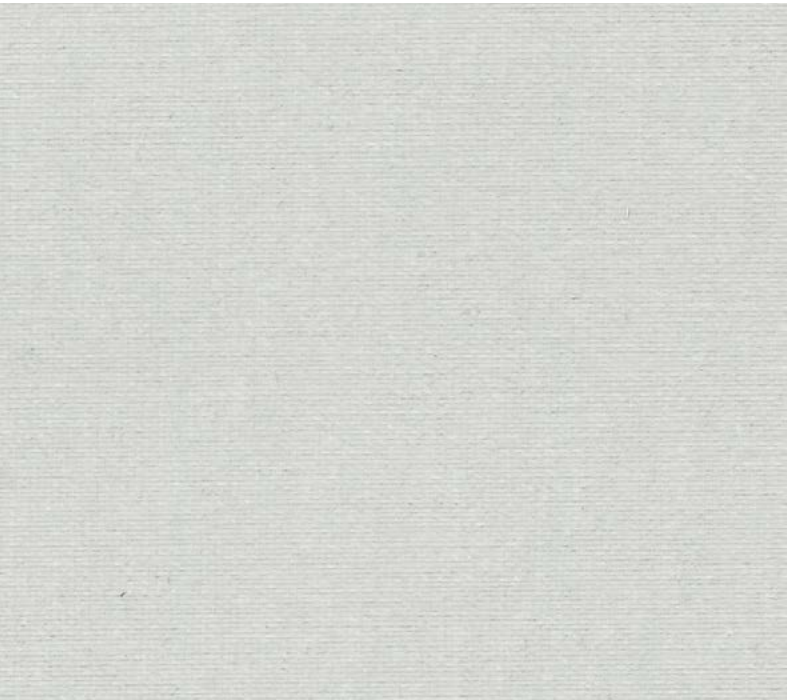
Wipe with damp sponge. Do not tumble dry; Do not dry clean: Do not iron

White Backed

Please note that when welding this fabric to create a join, it can only be accomplished via two methods; conventional stitching or ultrasonic bonding.

CI/SfB 1976 reference by SfB Agency			
	(76.7)	X	

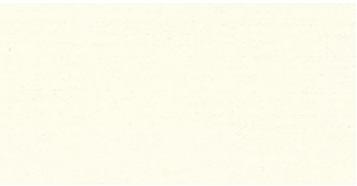
Ash



Frost



Sesame



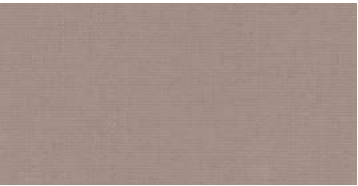
Vanilla



Warm Almond



Taupe



Chocolate



Plum



Lilac



Dusty Pink



Rose



Pink



Berry



Sesame



Tangerine



Sunshine



Primrose



Apple



Marsh



Pine Green



Dark Azure



Cobalt



Turquoise



Marine



Surf



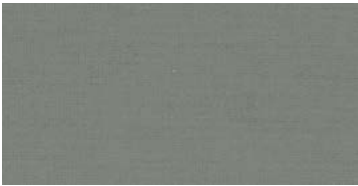
Stone Grey



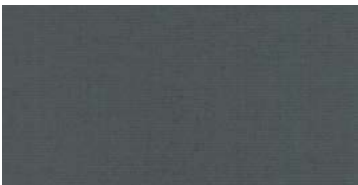
Fossil Grey



Graphite



Steel



Coal

