

Dart

Blackout PVC fabric



Roller and
louvre blackout fabric
collection for public
and corporate use.

- 4-ply PVC composite
- Anti-bacterial
- Easy clean
- Fire retardant

dart fabric

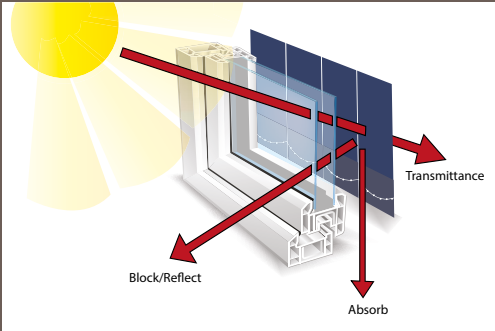
shading efficiency

Transmittance is the amount of light and heat transmitted beyond the fabric. The lower the amount, the greater the efficiency.

Block/reflect is the amount of heat and light that is blocked or reflected. The higher the amount, the greater the efficiency.

Absorption is the amount of heat and light absorbed in the fabric. The higher the amount, the lower the efficiency.

Ultraviolet protection illustrates how protective the fabric is against ultraviolet rays. The higher the amount, the greater the effectiveness.



this fabric is
GREENGUARD certified
as a low emissions
product suitable for
indoor use.

	3000 mm	2500 mm	1830 mm	127mm / 89 mm	Heat Transmittance %	Light Transmittance %	Shading Co-efficiency	Light Reflection %	Sun Block & UV Protection %	Absorption %	Heat Reflection %
White					0	0	0.33	83	100	27	73
Snow White					0	0	100	50	100	100	60
Vanilla					0	0	0.33	83	100	30	69
Beige					0	0	0.38	71	100	37	63
Magnolia					0	0	0.32	83	100	35	65
Grey					0	0	0.45	57	100	49	51
Iron					0	0	0.59	30	100	71	29
Black					0	0	0.71	5	100	95	5
Burgundy					0	0	0.42	7	100	83	17
Dark Green					0	0	0.55	14	100	92	8
Navy					0	0	0.39	8	100	91	9
Royal Blue					0	0	0.68	8	100	88	12
Pink					0	0	0.41	62	100	34	66
Mint Green					0	0	0.41	60	100	34	66
Sky Blue					0	0	0.41	62	100	36	64
Black / White					0	0	0.33	83	100	27	73

dart fabric

The Dart fabric is designed for areas where a high level of light exclusion is required along with exceptional performance characteristics. The flame retardant fibreglass composition with a PVC coating for easy cleaning, ensures this fabric is suitable for almost all applications. With 15 colours and the most advanced range of fabric widths available, fabric joins are kept to a minimum to assist in wastage, design and speed of fabrication. This fabric comes with a full Biosafe accreditation due to the anti-microbial properties of the fabric which inhibit the spread of bacteria, which has been tested under stringent conditions.

- Fabric Composition:

4-ply; 75% PVC, 25% Fibreglass
- Fabric Range:

15
- Louvre Widths:

127mm (5")
89mm (3.5")
- Vertical Roll Length:

100m
- Roller Fabric Width:

1830mm (72")
2500mm (98.4")
3000mm (118.11")
- Roller Fabric Length:

30m
- Fabric Thickness:

0.25mm - 0.33mm
- Fabric Weight:

407 g/m² - 12oz/syd
- Fire Retardancy:

Conforms to; BS5867, Part 2: Type B 2008 and BS 5867: Part 2: 2008 Type C
- IMO Certified:

IMO 2010 FTP CODE ANNEX 1 PART 7
- Shading:

Blackout. Suitable for computer environments
- Moisture Resistance:

Suitable for moist conditions
- Anti Bacterial:

Biosafe Accreditation
- Care Instructions:

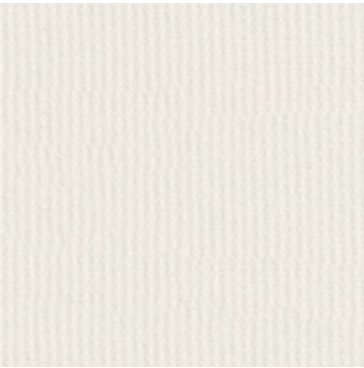
Wipe clean with a mild 5% detergent solution

CI/SfB 1976 reference by SfB Agency			
	(76.7)	X	

White



Snow White



Vanilla



Beige



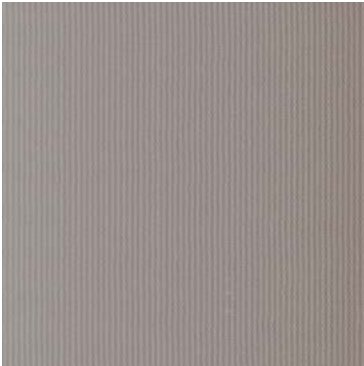
Magnolia



Grey



Iron



Pink



Burgundy



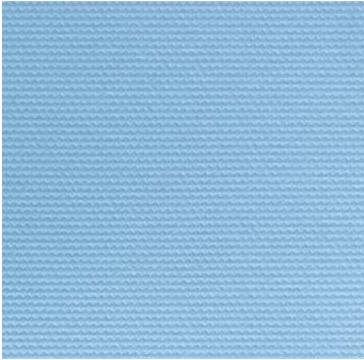
Black



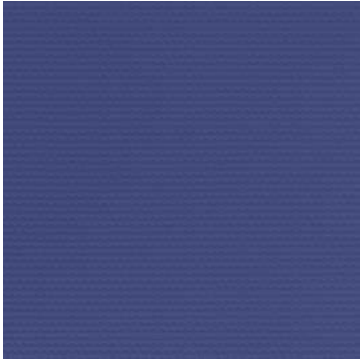
Black / White



Sky Blue



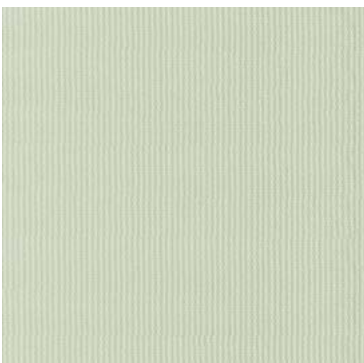
Royal Blue



Navy



Mint Green



Dark Green

