

The logo for JB Commercial Shadings is located in a black rectangular box. It features the letters 'JB' in a large, bold, orange font, followed by the words 'Commercial Shadings' in a smaller, white, sans-serif font.

JB Commercial
Shadings

The word 'DIMOUT' is centered within a white rectangular box with a thin border. The text is in a white, uppercase, sans-serif font.

DIMOUT

SOLAR AND OPTICAL PROPERTIES

SOLAR GAIN

The amount of heat increase resulting from solar energy entering a room. It is the total of three separate parts - the amount of energy transmitted directly into the room, the energy which is absorbed by the blind and a proportion of the energy which is absorbed by the window.

SHADING CO-EFFICIENT

The solar heat gain with the blind at the window divided by the solar heat gain with no blind at the window. The lower the shading co-efficient, therefore, the higher the efficiency of the fabric.

UNICOLOUR® SOLAR AND OPTICAL PERFORMANCE																		
	Solar			Visible			UV Block %	Solar Block %	QRF	CF	GTOT				SC			
	RS %	TS %	AS %	RV %	TV %	AV %					SG	DG	DGLE	TGLE	SG	DG	DGLE	TGLE
Naro	73	17	10	78	15	7	95	83	8	6	0.31	0.33	0.33	0.33	0.36	0.38	0.38	0.38
White	73	15	12	81	14	6	100	85	8	6	0.30	0.33	0.33	0.33	0.34	0.38	0.38	0.38
Shell	71	19	11	79	18	3	100	81	8	6	0.32	0.34	0.34	0.33	0.37	0.39	0.39	0.38
Cream	68	15	17	75	14	11	100	85	7	6	0.33	0.35	0.36	0.35	0.38	0.40	0.41	0.41
Beige	58	7	35	62	5	33	100	93	6	6	0.36	0.39	0.40	0.38	0.41	0.44	0.46	0.44
Taupe	41	3	56	44	1	54	100	97	4	6	0.44	0.46	0.47	0.44	0.50	0.53	0.55	0.51
Chocolate	18	0	81	18	0	81	100	100	2	6	0.55	0.56	0.58	0.52	0.64	0.64	0.66	0.60
Dove	44	4	52	48	2	49	100	96	5	6	0.42	0.45	0.46	0.43	0.49	0.51	0.53	0.49
Ash	37	3	60	37	1	61	100	97	4	6	0.46	0.48	0.49	0.46	0.53	0.55	0.57	0.52
Charcoal	19	0	81	20	0	80	100	100	2	6	0.55	0.56	0.57	0.52	0.63	0.55	0.66	0.59
Flint	25	1	74	24	0	75	100	99	2	6	0.57	0.56	0.49	0.46	0.65	0.65	0.56	0.53
Kara	14	0	86	13	0	87	100	100	1	6	0.63	0.62	0.52	0.50	0.73	0.72	0.60	0.57
Black	6	0	94	6	0	94	100	100	1	6	0.62	0.62	0.64	0.56	0.71	0.71	0.73	0.65
Luna	63	11	27	70	8	22	100	89	7	6	0.36	0.38	0.37	0.36	0.42	0.44	0.42	0.41
Rayon	53	12	35	30	2	67	100	88	4	6	0.42	0.43	0.40	0.38	0.48	0.49	0.46	0.44
Red	47	12	41	16	1	83	100	88	3	6	0.43	0.44	0.45	0.42	0.49	0.51	0.52	0.49
Morello	37	6	57	12	0	88	100	94	2	6	0.51	0.51	0.45	0.43	0.58	0.59	0.52	0.50
Mulberry	18	0	81	11	0	89	100	100	1	6	0.61	0.60	0.51	0.48	0.70	0.69	0.58	0.55
Atmosphere	55	7	38	50	2	47	100	93	5	6	0.40	0.42	0.39	0.38	0.46	0.48	0.45	0.43
Batik	61	9	30	52	3	46	100	91	6	6	0.37	0.39	0.37	0.36	0.43	0.45	0.43	0.42
Kiwi	48	8	44	44	2	54	100	92	5	6	0.44	0.45	0.41	0.40	0.51	0.52	0.47	0.46
Glade	32	6	63	17	0	83	100	94	2	6	0.53	0.53	0.47	0.44	0.61	0.61	0.53	0.51
Escape	36	5	58	19	0	81	100	95	3	6	0.51	0.51	0.45	0.43	0.58	0.59	0.52	0.50
Cyan	40	8	52	20	1	80	100	92	3	6	0.46	0.47	0.48	0.45	0.52	0.54	0.55	0.51
Lapis	18	0	82	12	0	88	100	100	1	6	0.61	0.60	0.51	0.48	0.70	0.69	0.58	0.56
Navy	9	0	91	6	0	94	100	100	1	6	0.60	0.60	0.62	0.55	0.69	0.69	0.71	0.63

Gtot and SC values in accordance with: EN Calculations 52022-1, EN Reference Glazing EN 52022-2

GLOSSARY

T: % Transmittance.

R: % Reflectiveness.

A: % Absorption.

UV Block: Percentage of UV light blocked by the fabric.

QRF: Quick Reference Factor.

CF: Colour Fastness.

gtot: The solar factor entering a building through a window and the shading device combined.

SC: Shading Co-efficient.

SG: Single Glazing.

DG: Double Glazing.

TGLE: Triple Glazing Low Emissivity.

DGLE: Double Glazing Low Emissivity.



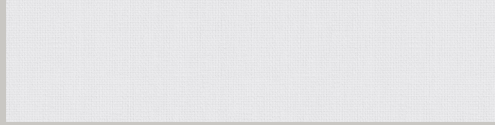
NARO

RP5645 2m
RP5646 2.5m
RP5647 3m
LP5570 89mm
LP5571 127mm



DOVE

RP2398 2m
RP2416 2.5m
RP5568 3m
LP2398 89mm
LP2416 127mm



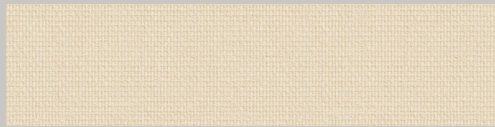
WHITE

RP2393 2m
RP2411 2.5m
RP5572 3m
LP2393 89mm
LP2411 127mm



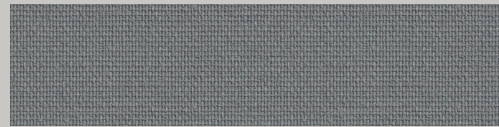
ASH

RP2399 2m
RP2417 2.5m
RP5561 3m
LP2399 89mm
LP2417 127mm



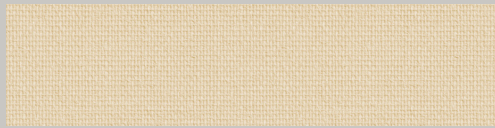
SHELL

RP5639 2m
RP5640 2.5m
RP5641 3m
LP5566 89mm
LP5567 127mm



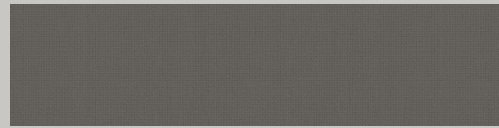
CHARCOAL

RP2400 2m
RP2418 2.5m
RP5564 3m
LP2400 89mm
LP2418 127mm



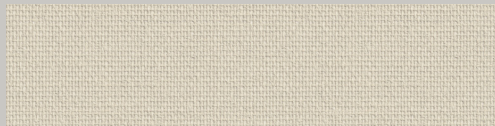
CREAM

RP2394 2m
RP2412 2.5m
RP5566 3m
LP2394 89mm
LP2412 127mm



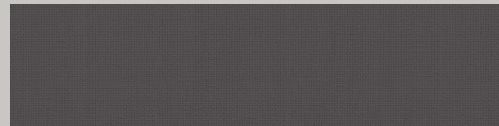
FLINT

RP5642 2m
RP5643 2.5m
RP5644 3m
LP5568 89mm
LP5569 127mm



BEIGE

RP2395 2m
RP2413 2.5m
RP5562 3m
LP2395 89mm
LP2413 127mm



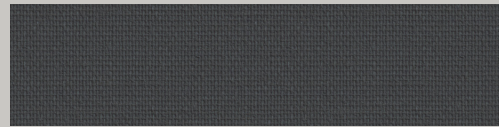
KARA

RP5693 2m
RP5694 2.5m
RP5695 3m
LP5546 89mm
LP5547 127mm



TAUPE

RP2396 2m
RP2414 2.5m
RP5571 3m
LP2396 89mm
LP2414 127mm



BLACK

RP2401 2m
RP2419 2.5m
RP5563 3m
LP2401 89mm
LP2419 127mm



CHOCOLATE

RP2397 2m
RP2415 2.5m
RP5565 3m
LP2397 89mm
LP2415 127mm



LUNA

RP5696	2m
RP5697	2.5m
RP5698	3m
LP5548	89mm
LP5549	127mm



KIWI

RP5627	2m
RP5628	2.5m
RP5629	3m
LP5558	89mm
LP5559	127mm



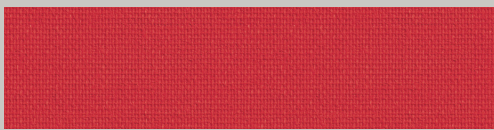
RAYON

RP5615	2m
RP5616	2.5m
RP5617	3m
LP5550	89mm
LP5551	127mm



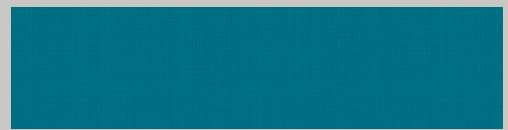
GLADE

RP5630	2m
RP5631	2.5m
RP5632	3m
LP5560	89mm
LP5561	127mm



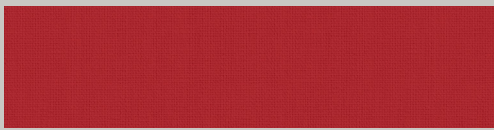
RED

RP2402	2m
RP2420	2.5m
RP5570	3m
LP2402	89mm
LP2420	127mm



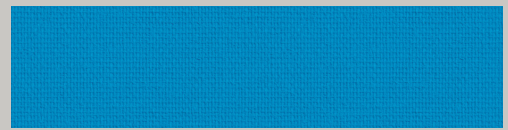
ESCAPE

RP5633	2m
RP5634	2.5m
RP5635	3m
LP5562	89mm
LP5563	127mm



MORELLO

RP5648	2m
RP5649	2.5m
RP5650	3m
LP5572	89mm
LP5573	127mm



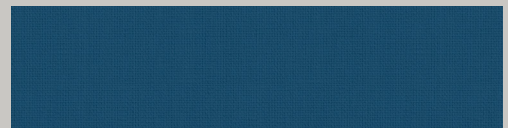
CYAN

RP2404	2m
RP2422	2.5m
RP5567	3m
LP2404	89mm
LP2422	127mm



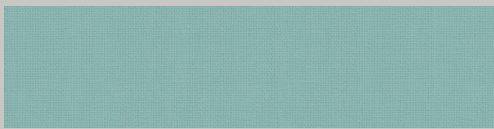
MULBERRY

RP5618	2m
RP5619	2.5m
RP5620	3m
LP5552	89mm
LP5553	127mm



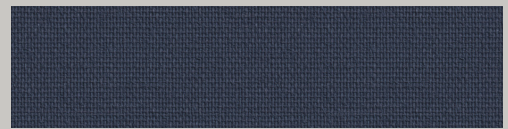
LAPIS

RP5636	2m
RP5637	2.5m
RP5638	3m
LP5564	89mm
LP5565	127mm



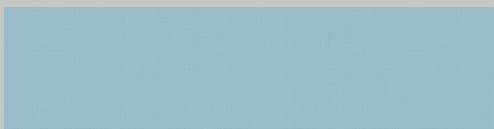
ATMOSPHERE

RP5621	2m
RP5622	2.5m
RP5623	3m
LP5554	89mm
LP5555	127mm



NAVY

RP2410	2m
RP2428	2.5m
RP5569	3m
LP2410	89mm
LP2428	127mm



BATIK

RP5624	2m
RP5625	2.5m
RP5626	3m
LP5556	89mm
LP5557	127mm

Unicolour® displays an array of 26 plain colourways specifically chosen for the contract environment.

Available in a selection of roller and vertical widths, Unicolour® provides the contract environment with a high quality, fire retardant compliant fabric.

Roller widths: 2m, 2.5m & 3m
Vertical widths: 89mm & 127mm

Achieving environmental standards in accordance with the ISO 14001 Environmental Management System, Unicolour® ensures that all products are manufactured under environmental protection without adding harmful substances.



UNICOLOUR®

<i>UNICOLOUR® DIMOUT SPECIFICATION</i>	
Colour Range	26
Roller Roll Length	30m
Roller Roll Width	2m / 2.5m / 3m
Vertical Roll Length	100m
Vertical Widths	89mm / 127mm
Fabric Composition	100% Polyester
Weight	228g/m ²
Thickness	0.36mm +/- 0.05mm
Care & Washing	Do not soak. Clean by gently wiping with a sponge
Availability	Ex-Stock
Colour Fastness	BS EN ISO 105 - B02 : 2014 - BS6
Flammability Standards	BS 5867-2 : 2008 Type B in accordance with BS EN ISO 15025: 2002 Procedure A
Samples	Fabric samples available on request
Property	Dimout
Direction on Roll	Multi-directional



