

The logo for JB Commercial Shadings features the letters 'JB' in a large, bold, orange font. To the right of 'JB', the words 'Commercial' and 'Shadings' are stacked vertically in a white, sans-serif font.

**JB** Commercial  
Shadings

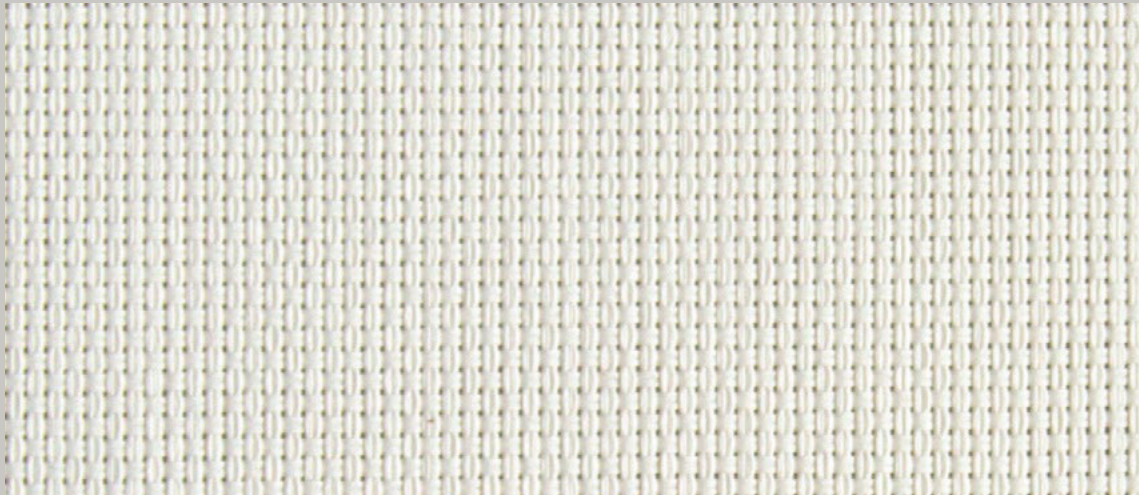
3000

3100

3200

**3**%

**UNIVIEW® 3000**



**CRYSTAL**

RPU663 - 1.83m  
RPU630 - 2.50m  
RPU680 - 3.00m



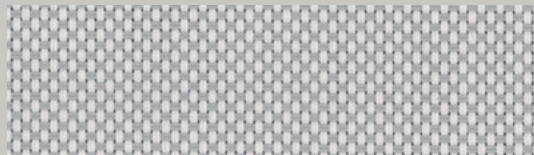
**ALABASTER**

RPU716 - 1.83m  
RPU717 - 2.50m  
RPU718 - 3.00m



**BEIGE**

RPU664 - 1.83m  
RPU631 - 2.50m  
RPU681 - 3.00m



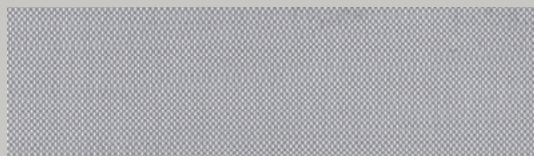
**COOL GREY**

RPU719 - 1.83m  
RPU720 - 2.50m  
RPU721 - 3.00m



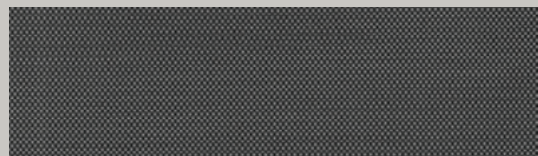
**SOFT STEEL**

RPU666 - 1.83m  
RPU633 - 2.50m  
RPU683 - 3.00m



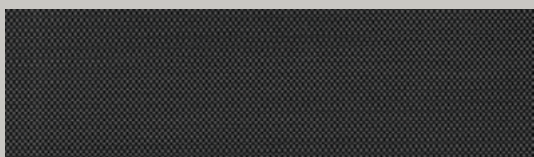
**PEARL GREY**

RPU665 - 1.83m  
RPU632 - 2.50m  
RPU682 - 3.00m



**STELLAR**

RPU668 - 1.83m  
RPU635 - 2.50m  
RPU685 - 3.00m



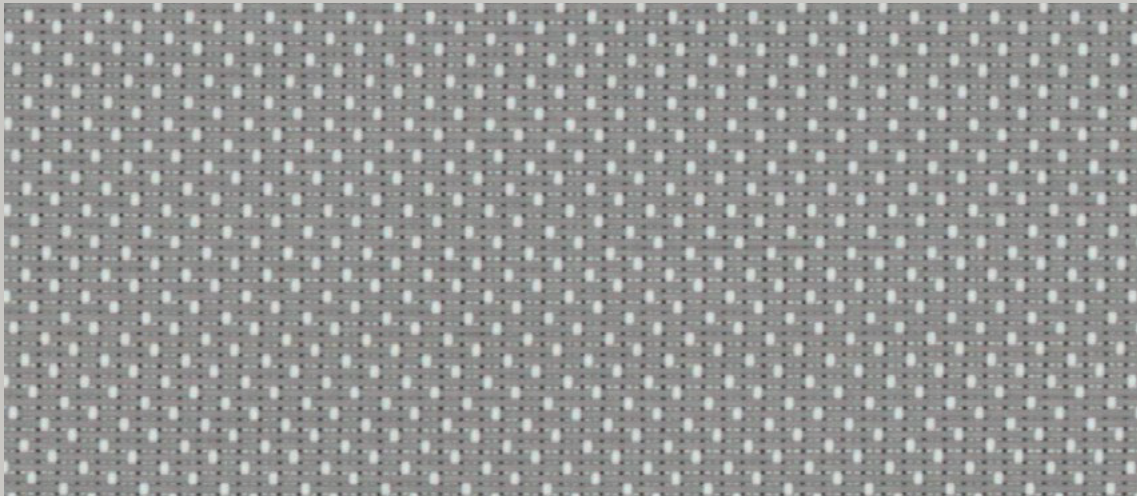
**JET**

RPU669 - 1.83m  
RPU636 - 2.50m  
RPU686 - 3.00m

**UNIVIEW® 3000**

Also available in 1%  
(Uniview 1300)

**UNIVIEW® 3100**



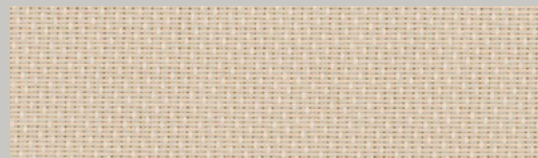
**SHADOW**

RPU648 - 1.83m  
RPU659 - 2.50m  
RPU693 - 3.00m



**WINTER WHITE**

RPU646 - 1.83m  
RPU657 - 2.50m  
RPU695 - 3.00m



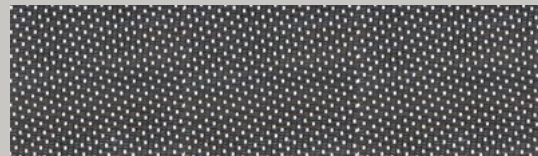
**CANOLA**

RPU746 - 1.83m  
RPU747 - 2.50m  
RPU748 - 3.00m



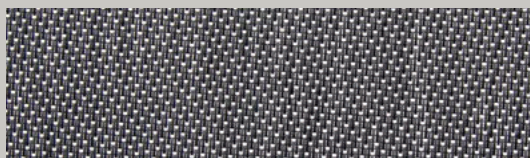
**STORM**

RPU650 - 1.83m  
RPU661 - 2.50m  
RPU692 - 3.00m



**NUTMEG**

RPU649 - 1.83m  
RPU660 - 2.50m  
RPU696 - 3.00m



**TWILIGHT**

RPU651 - 1.83m  
RPU662 - 2.50m  
RPU694 - 3.00m

**UNIVIEW® 3100**

Due to the nature of the weave, the exterior of all UNIVIEW® 3100 are white.

Also available in 1% (Uniview 1100)

**UNIVIEW® 3200 SUPERFINE**



**PRIMA**

LPU637 - 89mm  
RPU698 - 1.83m  
RPU704 - 2.50m  
RPU710 - 3.00m



**DUNE**

LPU638 - 89mm  
RPU699 - 1.83m  
RPU705 - 2.50m  
RPU711 - 3.00m



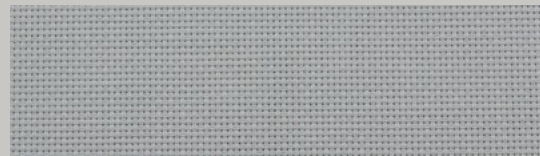
**SPARK**

LPU639 - 89mm  
RPU700 - 1.83m  
RPU706 - 2.50m  
RPU712 - 3.00m



**URBANE**

LPU640 - 89mm  
RPU701 - 1.83m  
RPU707 - 2.50m  
RPU713 - 3.00m



**ASTRAL**

LPU642 - 89mm  
RPU703 - 1.83m  
RPU709 - 2.50m  
RPU715 - 3.00m



**SPECTRE**

LPU641 - 89mm  
RPU702 - 1.83m  
RPU708 - 2.50m  
RPU714 - 3.00m

**JB** Commercial  
Shadings

3000  
3100  
3200

**3**%



Uniview® 3000, 3100 and 3200 Superfine fabrics are designed to satisfy the highest technical and aesthetic standards as demanded by today's residential, commercial, educational and healthcare applications.

Providing the best in transparent solar shading solutions, Uniview® fabrics are durable, washable and will not fray. Achieving the BS5867: 2008 Part 2 Type B standard for flammability standard, Uniview is also non-toxic, UV and bacteria resistant.

### UNIVIEW® SPECIFICATIONS

Series	3000		3100		3200 Superfine	
Colour Range	86				6	
Roller Roll Length	29-31m for 1.83m & 2.5m widths	20-22m for 3m widths	29-31m for 1.83m & 2.5m widths	20-22m for 3m widths	29-31m for 1.83m & 2.5m widths	20-22m for 3m widths
Roller Roll Width	1.83m / 2.5m / 3m		1.83m / 2.5m / 3m		1.83m / 2.5m / 3m	
Vertical Roll Width	N/A		/A		89mm	
Fabric Composition	30% Polyester 70% Vinyl on Polyester		25% Polyester 75% Vinyl on Polyester		25% Polyester, 75% Vinyl on Polyester	
Mesh/cm	19 x 19		20 x 19		26 x 22	
Mesh Weight	410g/m <sup>2</sup>		510g/m <sup>2</sup>		325g/m <sup>2</sup>	
Yarn Diameter	0.33mm x 0.33mm0		.33mm x 0.33mm0		.24mm x 0.26mm	
Thickness	0.53mm0		.57mm0		.43mm	
Breaking Strength	330 x 330lbs (ASTM D5035)		330 x 330lbs (ASTM D5035)		1350 x 1100lbs (ASTM D5035)	
Abrasion Resistance	>1000 (ASTM D4966)		>1000 (ASTM D4966)N		/A	
Openness Factor	3%		3%		3%	
Care & Washing	Do not soak. Clean by gently wiping with a sponge.		Do not soak. Clean by gently wiping with a sponge.		Do not soak. Clean by gently wiping with a sponge.	
Colour Fastness	BS EN ISO 105 - B02:1999 (colour fastness to artificial light Std 5)		BS EN ISO 105 - B02:1999 (colour fastness to artificial light Std 5)		BS EN ISO 105 - B02:1999 (colour fastness to artificial light Std 6)	
Flammability Standards	BS 5867 (1980 Part 2, Type B), B1 DIN-4102		BS 5867 (1980 Part 2, Type B), B1 DIN-4102		BS5867 (2008 Part 2, Type B), B1 DIN-4102	
Anti-Fungal	ASTM G21		ASTM G21		ASTM G21	
Property	Dim OutD		im Out		Dim Out	
Samples	Fabric samples available on request		Fabric samples available on request		Fabric samples available on request	

# SOLAR AND OPTICAL PROPERTIES

## SOLAR GAIN

The amount of heat increase resulting from solar energy entering a room. It is the total of three separate parts - the amount of energy transmitted directly into the room, the energy which is absorbed by the blind and a proportion of the energy which is absorbed by the window.

## SHADING CO-EFFICIENT

The solar heat gain with the blind at the window divided by the solar heat gain with no blind at the window. The lower the shading co-efficient, therefore, the higher the efficiency of the fabric.

UNIVIEW® SOLAR AND OPTICAL PERFORMANCE																	
	Solar			Visible			UV	QRF	CF	GTOT				SC			
	RS %	TS %	AS %	RV %	TV %	AV %	Block %			SG	DG	TG	DGLE	SG	DG	TG	DGLE
<b>Uniview® 3000</b>																	
Crystal	70	18	12	81	16	3	95	8	6+	0.32	0.34	0.35	0.35	0.37	0.40	0.40	0.40
Alabaster	67	15	18	75	11	13	95	7	6+	0.33	0.36	0.36	0.36	0.38	0.41	0.41	0.42
Beige	56	20	24	63	16	20	92	6	6+	0.40	0.41	0.40	0.42	0.46	0.47	0.46	0.48
Cool Grey	53	11	35	59	8	33	95	6	6+	0.39	0.41	0.40	0.42	0.45	0.47	0.46	0.48
Soft Steel	39	9	51	43	6	51	95	4	6+	0.46	0.47	0.45	0.49	0.53	0.54	0.52	0.56
Pearl Grey	48	11	41	54	8	37	95	5	6+	0.42	0.44	0.42	0.45	0.48	0.50	0.48	0.51
Stellar	10	7	83	11	6	83	94	1	6+	0.61	0.60	0.55	0.62	0.70	0.69	0.64	0.71
Jet	3	6	90	4	6	90	94	0	6+	0.64	0.63	0.58	0.65	0.74	0.73	0.66	0.75
<b>Uniview® 3100</b>																	
Winter White	70	19	11	81	17	2	96	8	6+	0.32	0.34	0.35	0.35	0.37	0.40	0.40	0.40
Canola	67	16	18	69	12	18	96	7	6+	0.33	0.36	0.36	0.36	0.38	0.41	0.41	0.42
Shadow	56	12	33	64	9	27	96	6	6+	0.38	0.40	0.39	0.41	0.44	0.46	0.45	0.47
Storm	53	8	39	62	6	32	97	6	6+	0.39	0.41	0.40	0.42	0.45	0.47	0.46	0.49
Nutmeg	47	7	45	55	6	39	95	5	6+	0.42	0.44	0.42	0.45	0.48	0.50	0.48	0.52
Twilight	47	7	46	56	6	38	95	5	6+	0.41	0.44	0.42	0.45	0.48	0.50	0.48	0.52
<b>Uniview® 3200 Superfine</b>																	
Prima	68	18	14	77	15	8	95	7	8	0.33	0.35	0.35	0.36	0.38	0.40	0.41	0.41
Dune	58	20	22	66	16	19	95	6	8	0.38	0.40	0.39	0.41	0.44	0.46	0.45	0.47
Spark	51	15	35	56	11	33	95	5	8	0.41	0.43	0.41	0.44	0.48	0.49	0.48	0.50
Urbane	43	13	44	49	10	42	95	5	8	0.45	0.46	0.44	0.47	0.52	0.53	0.51	0.54
Astral	39	13	49	42	9	50	93	4	8	0.47	0.48	0.46	0.49	0.54	0.55	0.52	0.57
Spectre	9	9	82	10	8	82	92	1	8	0.61	0.61	0.56	0.62	0.71	0.70	0.64	0.72

## GLOSSARY

**T:** % Transmittance.

**R:** % Reflectiveness.

**A:** % Absorption.

**UV Block:** Percentage of UV light blocked by the fabric.

**QRF:** Quick Reference Factor.

**CF:** Colour Fastness.

**gtot:** The solar factor entering a building through a window and the shading device combined.

**SC:** Shading Co-efficient.

**SG:** Single Glazing.

**DG:** Double Glazing.

**TG:** Triple Glazing.

**DGLE:** Double Glazing Low Emissivity.

