

Pictured: Iona Lovett



DIM OUT

BLOCKOUT

IONA & IONA BLACKOUT

ROLLER, VERTICAL AND PANEL BLINDS

A lightly textured, plain fabric offered as both light filtering and blackout in 10 colours.

Iona and Iona Blackout are flame retardant, Greenshield fabrics.

Composition: 100% Polyester

Fabric Width: 2.10m (82.7")

Light Filtering Weight: 290g/m² (8.6oz/yd²)

Blackout Weight: 447g/m² (14.1oz/yd²)



GTOT: The amount of heat transmitted through the combination of glass and solar shading.
 DG: Double Glazed
 TG: Triple Glazed
 DG LE: Double Glazed Low Emissivity.
 G Value: amount of heat transmitted through the glazing
 SG: Single Glazed
 Dim out:
 1 = High light penetration
 4 = Low light penetration
 5 = Blockout
 UV Block: the % of UV light blocked by the fabric
 SC: Shading Co-efficient
 CF: Colour Fastness
 T: % Transmittance
 R: % Reflectance
 A: % Absorption

IONA

SOLAR, OPTICAL AND COLOUR FASTNESS PROPERTIES

	SOLAR			OPTICAL			UV block	SC	CF	DIM out	G VALUE				G TOT
	T _s	R _s	A _s	T _o	R _o	A _o					SG	DG	TG	DG LE	
Albatross	8	68	24	2	62	36	100	0.34	5	3	0.33	0.35	0.34	0.35	0.14
Charcoal	5	46	49	0	24	76	100	0.56	6	3	0.45	0.46	0.40	0.42	0.18
Jasmine	10	79	11	9	86	5	100	0.24	6+	3	0.26	0.30	0.31	0.31	0.13
Lotus	14	80	6	14	86	0	100	0.23	5	3	0.26	0.30	0.31	0.31	0.15
Lovett	6	55	39	2	39	59	100	0.47	6	3	0.40	0.42	0.38	0.39	0.16
Mercury	7	57	36	1	38	61	100	0.45	5	3	0.39	0.41	0.37	0.38	0.16
Royal Blue	5	45	50	0	23	77	100	0.57	6	3	0.46	0.46	0.41	0.42	0.18
Sandstone	10	46	44	5	24	71	100	0.56	6	3	0.46	0.46	0.41	0.42	0.21
Scarlet	4	48	48	1	24	75	100	0.54	4	3	0.44	0.45	0.40	0.41	0.16
Wedgewood	7	54	39	1	36	63	100	0.48	6+	3	0.41	0.42	0.38	0.39	0.17

IONA BLACKOUT

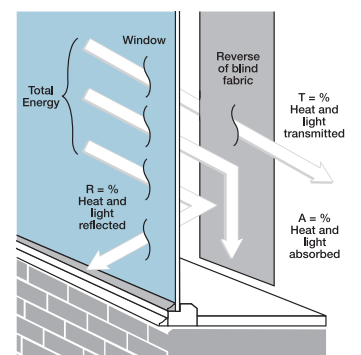
SOLAR, OPTICAL AND COLOUR FASTNESS PROPERTIES

	SOLAR			OPTICAL			UV block	SC	CF	DIM out	G VALUE				G TOT
	T _s	R _s	A _s	T _o	R _o	A _o					SG	DG	TG	DG LE	
Cherry	0	81	19	0	91	9	100	0.22	5	5	0.24	0.28	0.30	0.30	0.05
Cloud	0	81	19	0	91	9	100	0.22	5	5	0.24	0.28	0.30	0.30	0.05
Dolphin	0	81	19	0	91	9	100	0.22	5	5	0.24	0.28	0.30	0.30	0.05
Forest	0	81	19	0	91	9	100	0.22	5	5	0.24	0.28	0.30	0.30	0.05
French Blue	0	81	19	0	91	9	100	0.22	5	5	0.24	0.28	0.30	0.30	0.05
Hessian	0	81	19	0	91	9	100	0.22	5	5	0.24	0.28	0.30	0.30	0.05
Lily	0	81	19	0	91	9	100	0.22	4	5	0.24	0.28	0.30	0.30	0.05
Maritime	0	81	19	0	91	9	100	0.22	5	5	0.24	0.28	0.30	0.30	0.05
Meringue	0	81	19	0	91	9	100	0.22	4	5	0.24	0.28	0.30	0.30	0.05
Slate	0	81	19	0	91	9	100	0.22	4	5	0.24	0.28	0.30	0.30	0.05

SOLAR GAIN: The amount of heat increase resulting from solar energy entering a room. It is the total of three separate parts - the amount of energy transmitted directly into the room, the energy which is absorbed by the blind and the proportion of energy which is absorbed by the window.

SHADING CO-EFFICIENT: The solar heat gain with the blind at the window divided by the solar heat gain with no blind at the window. The lower the shading co-efficient, therefore, the higher the efficiency of the fabric. The test results in the table above have been achieved using a single 6mm glass glazing system.

G TOT: When the G-value (a measure of total solar energy that passes through the glazing system and the blind fabric) is combined with the value of the shading.

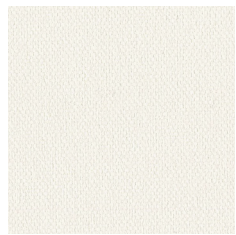


JB Commercial Shadings
 Unit B The Foundry
 Russell Gardens
 Wickford
 Essex

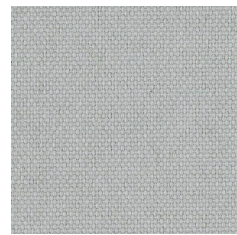


CI/SfB 1976 reference by SfB Agency		
(76.7)	X	

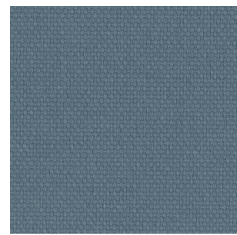
IONA



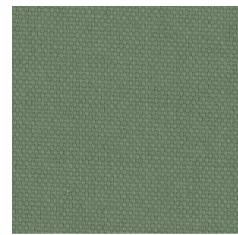
Lotus



Albatross



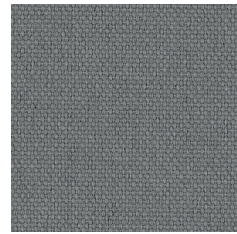
Wedgewood



Lovett



Jasmine



Mercury



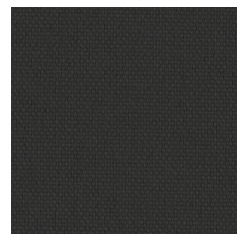
Royal Blue



Scarlet



Sandstone



Charcoal

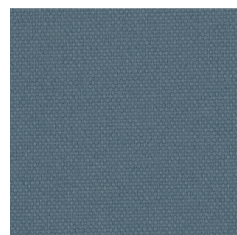
IONA BLACKOUT



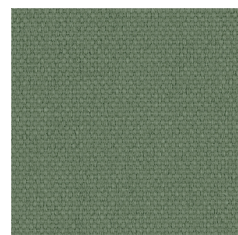
Lily



Cloud



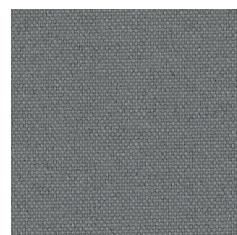
French Blue



Forest



Meringue



Dolphin



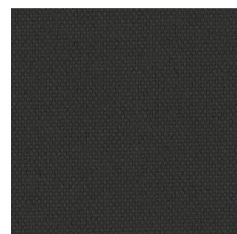
Maritime



Cherry



Hessian



Slate



IONA

Fabric Composition

100% polyester

Fabric Width

2.10m (82.7")

Fabric Weight

290g/m² (8.6oz/yd²)

Flammability Standards

Iona meets FR standard BS 5867 Part 2 Type B. Further information is available on request.

Colour Fastness

Tested in accordance with BS EN ISO 105-B01:1999

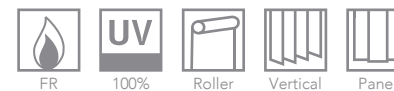
Cleaning

Iona fabrics are no clean. See manufacturers instructions. Tested in accordance with BS EN 26330:1994 method 7a.

Greenshield

Fabrics featuring Greenshield have been tested to confirm no harmful VOC's or hazardous substances will be released into the environment in quantities that are recognised as potentially dangerous to occupants of dwellings or buildings.

Properties



IONA BLACKOUT

Fabric Composition

100% polyester

Fabric Width

2.10m (82.7")

Fabric Weight

447g/m² (14.1oz/yd²)

Flammability Standards

Iona Blackout meets FR standard BS 5867 Part 2 Type B. Further information is available on request.

Colour Fastness

Tested in accordance with BS EN ISO 105-B01:1999

Cleaning

Iona Blackout fabrics are no clean. See manufacturers instructions. Tested in accordance with BS EN 26330:1994 method 7a.

Greenshield

Fabrics featuring Greenshield have been tested to confirm no harmful VOC's or hazardous substances will be released into the environment in quantities that are recognised as potentially dangerous to occupants of dwellings or buildings.

Properties



Please note: Blockout fabric does not create a fully blackout blind, there will be lightstrike at the edge of the blind.