



DIM OUT SPC

## DAPPLE SPC®+

ROLLER AND VERTICAL BLINDS

A textured stitch bond, flame retardant, plain fabric in 6 colours. Dapple SPC®+ has a solar protective coating which is effective in the reduction of glare entering a room.

Dapple SPC®+ features SPC®, Ultra-Fresh\* and is a Greenshield fabric.

Composition: 100% Polyester

Fabric Width: 2.00m (78")

Louvre Width: 89mm (3½") or 127mm (5")

Weight: 313g/m<sup>2</sup> (9.2oz/yd<sup>2</sup>)



## DAPPLE SPC®+

### SOLAR, OPTICAL AND COLOUR FASTNESS PROPERTIES

	SOLAR			OPTICAL			UV block	SC	CF	DIM out	G VALUE				G TOT
	T <sub>s</sub>	R <sub>s</sub>	A <sub>s</sub>	T <sub>o</sub>	R <sub>o</sub>	A <sub>o</sub>					SG	DG	TG	DG LE	
Cream	15	52	33	1	55	44	100	0.50	6+	3	0.43	0.44	0.39	0.40	0.24
Ice	16	53	31	14	56	30	100	0.49	6+	3	0.42	0.43	0.39	0.40	0.24
Linen	10	70	20	5	70	25	100	0.32	6	3	0.32	0.34	0.34	0.34	0.15
Ocean	6	50	44	0	27	73	100	0.52	6	3	0.43	0.44	0.39	0.41	0.17
Slate	11	43	46	3	39	58	100	0.58	6+	3	0.48	0.48	0.41	0.43	0.23
Steel	7	54	39	0	36	64	100	0.48	6	3	0.41	0.42	0.38	0.39	0.17

T: % Transmittance  
R: % Reflectance  
A: % Absorption

UV Block: the % of UV light blocked by the fabric  
SC: Shading Co-efficient  
CF: Colour Fastness

Dim out:  
1 = High light penetration  
4 = Low light penetration  
5 = Blockout

G Value: amount of heat transmitted through the glazing  
SG: Single Glazed

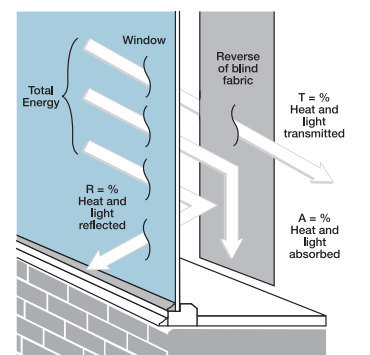
DG: Double Glazed  
TG: Triple Glazed  
DG LE: Double Glazed Low Emissivity.

GTOT: The amount of heat transmitted through the combination of glass and solar shading.

**SOLAR GAIN:** The amount of heat increase resulting from solar energy entering a room. It is the total of three separate parts - the amount of energy transmitted directly into the room, the energy which is absorbed by the blind and the proportion of energy which is absorbed by the window.

**SHADING CO-EFFICIENT:** The solar heat gain with the blind at the window divided by the solar heat gain with no blind at the window. The lower the shading co-efficient, therefore, the higher the efficiency of the fabric. The test results in the table above have been achieved using a single 6mm glass glazing system.

**G TOT:** When the G-value (a measure of total solar energy that passes through the glazing system and the blind fabric) is combined with the value of the shading.

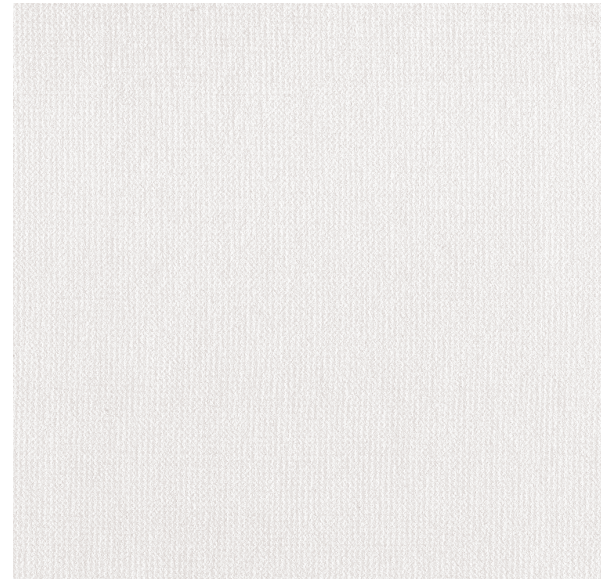


JB Commercial Shadings  
Unit B The Foundry  
Russell Gardens  
Wickford  
Essex

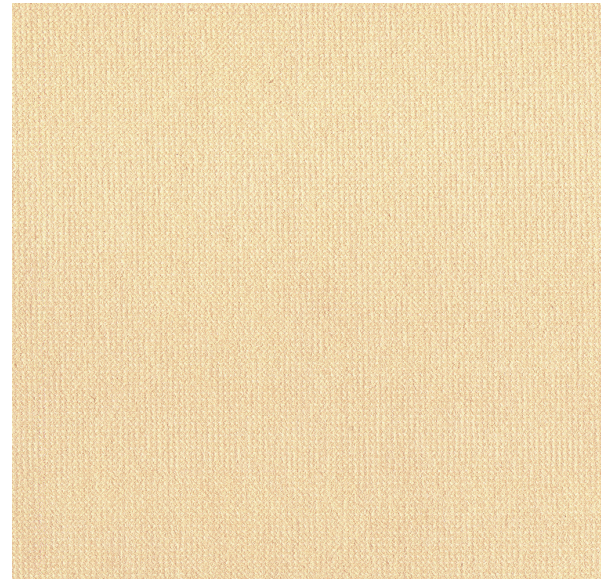


CI/SfB 1976 reference by SfB Agency		
(76.7)	X	

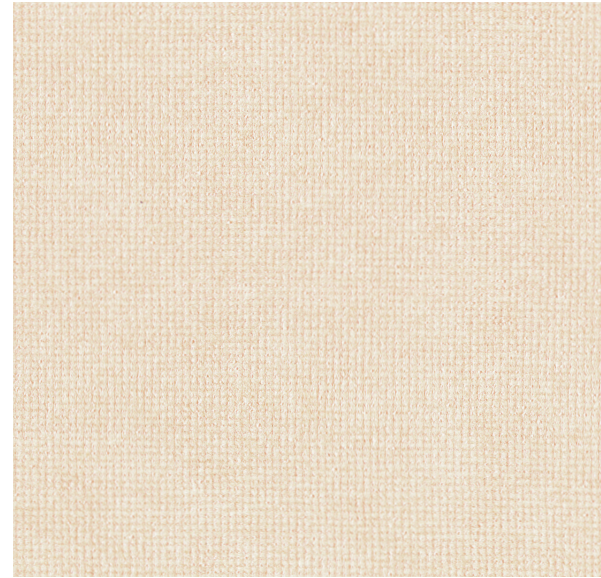
# DAPPLE SPC®+



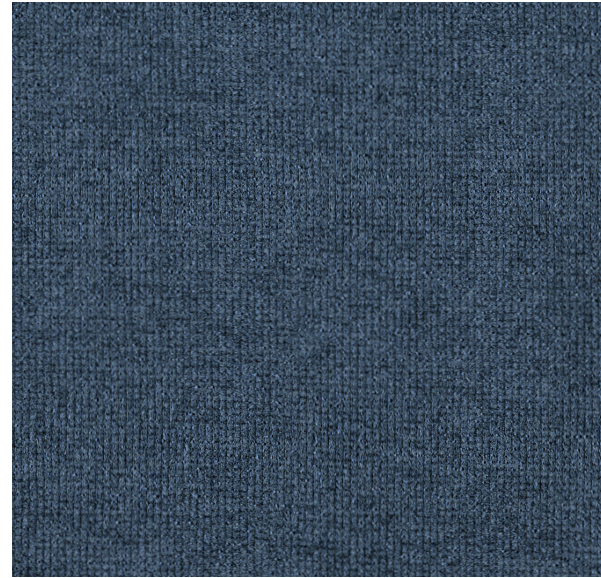
Ice



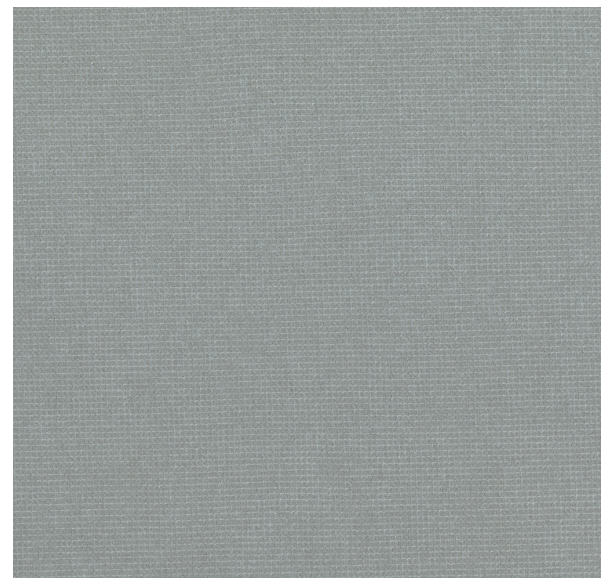
Cream



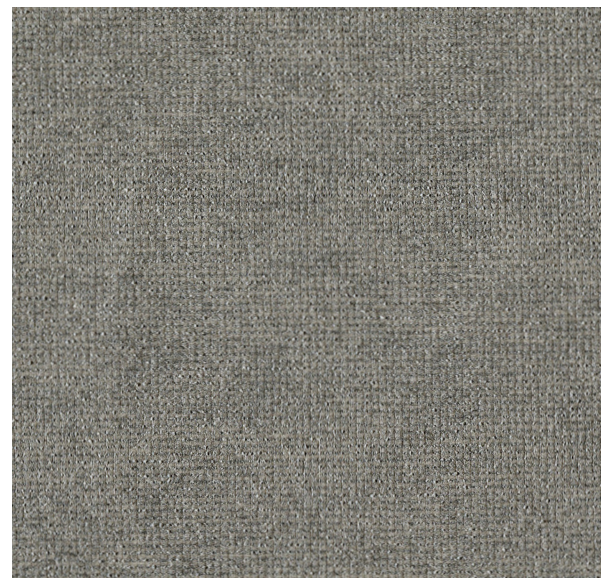
Linen



Ocean



Slate



Steel

## Fabric Composition

100% polyester

## Fabric Width

2.00m (78")

## Vertical Louvre Width

89mm (3½") or 127mm (5")  
Other widths available on request

## Fabric Weight

313g/m<sup>2</sup> (9.2oz/yd<sup>2</sup>)

## Flammability Standards

Dapple SPC®+ meets FR standard BS 5867 Part 2 Type B. Further information is available on request.

## Colour Fastness

Tested in accordance with BS EN ISO 105-B01:1999

## Cleaning

Dapple SPC®+ fabrics can be wiped clean. See manufacturers instructions. Tested in accordance with BS EN 26330:1994 method 7a.

## SPC®

A Solar Protective Coating applied to the reverse of the fabric that reduces glare, reflects and filters light more effectively than conventional fabrics.

## Greenshield

Fabrics featuring Greenshield have been tested to confirm no harmful VOC's or hazardous substances will be released into the environment in quantities that are recognised as potentially dangerous to occupants of dwellings or buildings.

## Ultra-Fresh\*

A fabric treated with Ultra-Fresh\* protects against the growth of odour causing bacteria and fungi, preserving fabric freshness.

\*Ultra-fresh is a registered trademark of Thomson Research Associates, Canada.

## Properties

