



DIM OUT

VOILE

SOLAR, OPTICAL AND COLOUR FASTNESS PROPERTIES

	SOLAR			OPTICAL			UV block	SC	CF	DIM out	G VALUE				G TOT
	T _s	R _s	A _s	T _o	R _o	A _o					SG	DG	TG	DG LE	
Cobalt Blue	21	42	37	19	39	42	81	0.81	5	2	0.50	0.49	0.42	0.44	0.30
Cream	39	61	0	30	70	0	79	0.65	5	1	0.41	0.41	0.37	0.38	0.37
Grape	30	54	16	20	40	40	81	0.73	5	2	0.45	0.45	0.39	0.41	0.34
Moondust	25	51	24	23	50	27	81	0.64	5	2	0.27	0.30	0.31	0.31	0.31
Papaya	33	60	7	25	53	22	80	0.67	5	2	0.41	0.41	0.37	0.38	0.35
Sage	34	66	0	34	66	0	79	0.62	5	1	0.37	0.38	0.35	0.36	0.37
Sandshell	35	65	0	32	64	4	80	0.72	5	1	0.38	0.38	0.35	0.36	0.35
White	30	70	0	30	70	0	79	0.66	6	2	0.34	0.36	0.34	0.35	0.38

T: % Transmittance
R: % Reflectance
A: % Absorption

UV Block: the % of UV light blocked by the fabric
SC: Shading Co-efficient
CF: Colour Fastness

Dim out:
1 = High light penetration
4 = Low light penetration
5 = Blockout

G Value: amount of heat transmitted through the glazing
SG: Single Glazed

DG: Double Glazed
TG: Triple Glazed
DG LE: Double Glazed Low Emissivity.

GTOT: The amount of heat transmitted through the combination of glass and solar shading.

VOILE

ROLLER, VERTICAL, PANEL AND PLEATED BLINDS

A translucent, flame retardant fabric in a palette of 8 colours.

Voile features Ultra-Fresh* and is a Greenshield fabric.

Composition: 100% Polyester

Fabric Width: 2.00m (78")

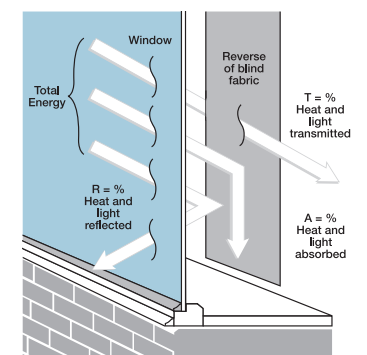
Louvre Width: 89mm (3½") or 127mm (5")

Weight: 131g/m² (3.9oz/yd²)

SOLAR GAIN: The amount of heat increase resulting from solar energy entering a room. It is the total of three separate parts - the amount of energy transmitted directly into the room, the energy which is absorbed by the blind and the proportion of energy which is absorbed by the window.

SHADING CO-EFFICIENT: The solar heat gain with the blind at the window divided by the solar heat gain with no blind at the window. The lower the shading co-efficient, therefore, the higher the efficiency of the fabric. The test results in the table above have been achieved using a single 6mm glass glazing system.

G TOT: When the G-value (a measure of total solar energy that passes through the glazing system and the blind fabric) is combined with the value of the shading.



JB Commercial Shadings
Unit B The Foundry
Russell Gardens
Wickford
Essex

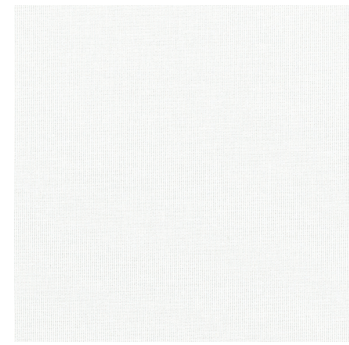


Manufactured in the UK

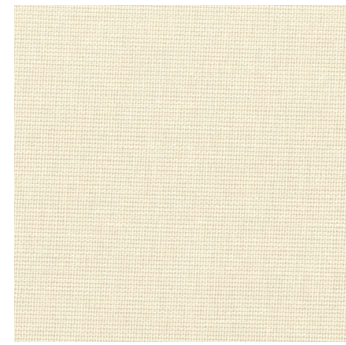
CI/SfB 1976 reference by SfB Agency

(76.7) X

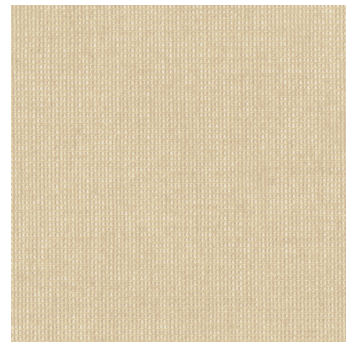
VOILE



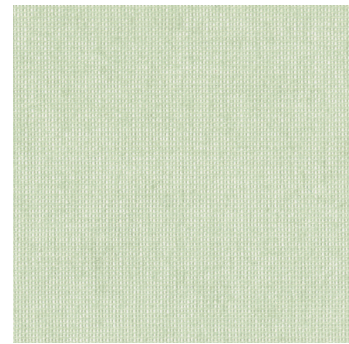
White



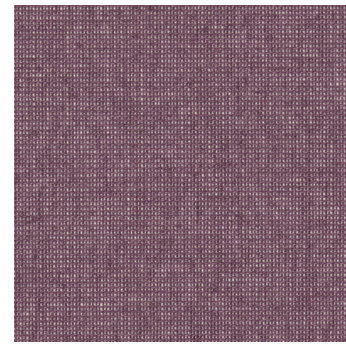
Cream



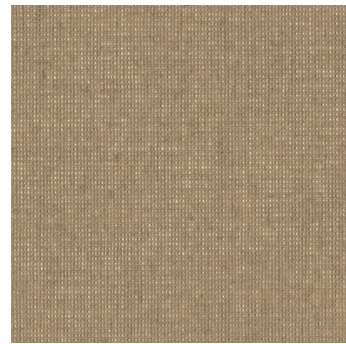
Sandshell



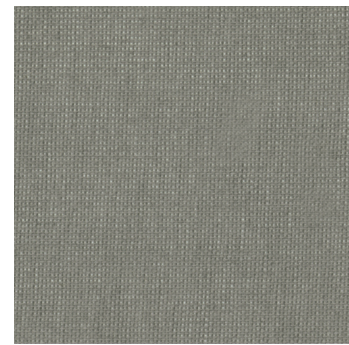
Sage



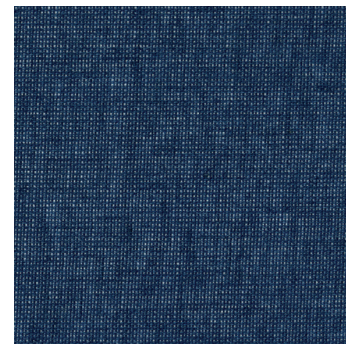
Grape



Papaya



Moondust



Cobalt Blue

Fabric Composition

100% polyester

Fabric Width

2.00m (78")

Vertical Louvre Width

89mm (3½") or 127mm (5")
Other widths available on request

Fabric Weight

131g/m² (3.9oz/yd²)

Flammability Standards

Voile meets FR standard BS 5867 Part 2 Type B.
Further information is available on request.

Colour Fastness

Tested in accordance with BS EN ISO 105-B01:1999

Cleaning

Voile fabrics can be wiped clean. See manufacturers instructions. Tested in accordance with BS EN 26330:1994 method 7a.

Ultra-Fresh*

A fabric treated with Ultra-Fresh* protects against the growth of odour causing bacteria and fungi, preserving fabric freshness.

*Ultra-fresh is a registered trademark of Thomson Research Associates, Canada.

Greenshield

Fabrics featuring Greenshield have been tested to confirm no harmful VOC's or hazardous substances will be released into the environment in quantities that are recognised as potentially dangerous to occupants of dwellings or buildings.

Properties

