



SCREEN

WIDE WIDTH

## PERSPECTIVE

ROLLER AND PANEL BLINDS

A finely woven, flame retardant screen fabric available in 6 colourways.

Perspective is a wide width fabric.

Composition: 78% PVC 22% Polyester

Fabric Width: 3m (118")

Weight: 464g/m<sup>2</sup> (13.7oz/yd<sup>2</sup>)

Openess Factor: 3%



## PERSPECTIVE

SOLAR, OPTICAL AND COLOUR FASTNESS PROPERTIES

	SOLAR			OPTICAL			UV block	SC	CF	DIM out	G VALUE				G TOT
	T <sub>s</sub>	R <sub>s</sub>	A <sub>s</sub>	T <sub>o</sub>	R <sub>o</sub>	A <sub>o</sub>					SG	DG	TG	DG LE	
Arctic White	21	69	10	17	82	1	94	0.33	6	3	0.34	0.36	0.34	0.35	0.24
Black Iron	4	8	88	4	9	87	95	0.92	6	3	0.67	0.65	0.51	0.54	0.28
Desert Sand	20	60	20	15	68	17	95	0.42	6	3	0.39	0.40	0.37	0.38	0.25
Shale Grey	13	44	43	9	51	40	95	0.57	6	3	0.47	0.47	0.41	0.43	0.28
Tuscan Beige	21	62	17	17	73	10	95	0.40	6	3	0.38	0.38	0.36	0.37	0.25
Windspray Grey	18	53	29	14	60	26	94	0.49	6	3	0.43	0.43	0.39	0.40	0.25

T: % Transmittance  
R: % Reflectance  
A: % Absorption

UV Block: the % of UV light blocked by the fabric  
SC: Shading Co-efficient  
CF: Colour Fastness

Dim out:  
1 = High light penetration  
4 = Low light penetration  
5 = Blockout

G Value: amount of heat transmitted through the glazing  
SG: Single Glazed

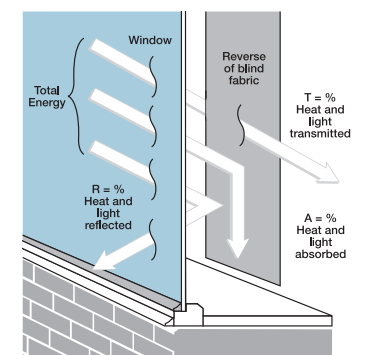
DG: Double Glazed  
TG: Triple Glazed  
DG LE: Double Glazed Low Emissivity.

GTOT: The amount of heat transmitted through the combination of glass and solar shading.

**SOLAR GAIN:** The amount of heat increase resulting from solar energy entering a room. It is the total of three separate parts - the amount of energy transmitted directly into the room, the energy which is absorbed by the blind and the proportion of energy which is absorbed by the window.

**SHADING CO-EFFICIENT:** The solar heat gain with the blind at the window divided by the solar heat gain with no blind at the window. The lower the shading co-efficient, therefore, the higher the efficiency of the fabric. The test results in the table above have been achieved using a single 6mm glass glazing system.

**G TOT:** When the G-value (a measure of total solar energy that passes through the glazing system and the blind fabric) is combined with the value of the shading.



JB Commercial Shadings  
Unit B The Foundry  
Russell Gardens  
Wickford  
Essex



CI/SfB 1976 reference by SfB Agency		
(76.7)	X	

# PERSPECTIVE

## Fabric Composition

78% PVC 22% polyester

## Fabric Width

3.00m (118")

## Openness

3%

Openness factors are for guidance only. For comprehensive performance data please see Louvolite for solar and optical figures.

## Fabric Weight

464g/m<sup>2</sup> (13.7oz/yd<sup>2</sup>)

## Flammability Standards

Perspective meets FR standard BS 5867 Part 2 Type B. Further information is available on request.

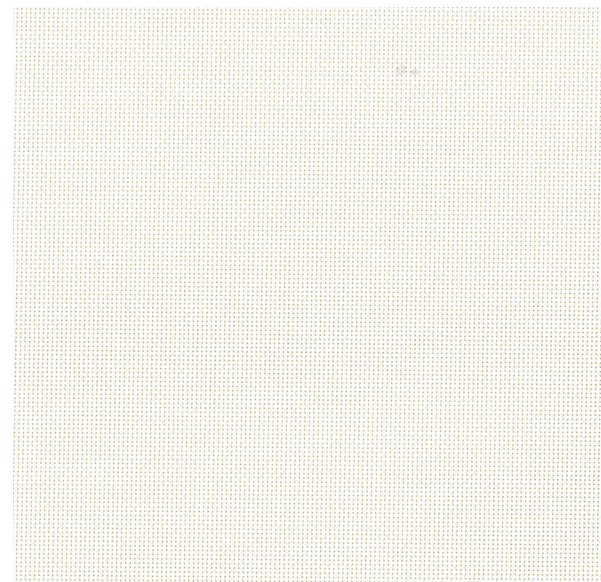
## Colour Fastness

Tested in accordance with BS EN ISO 105-B01:1999

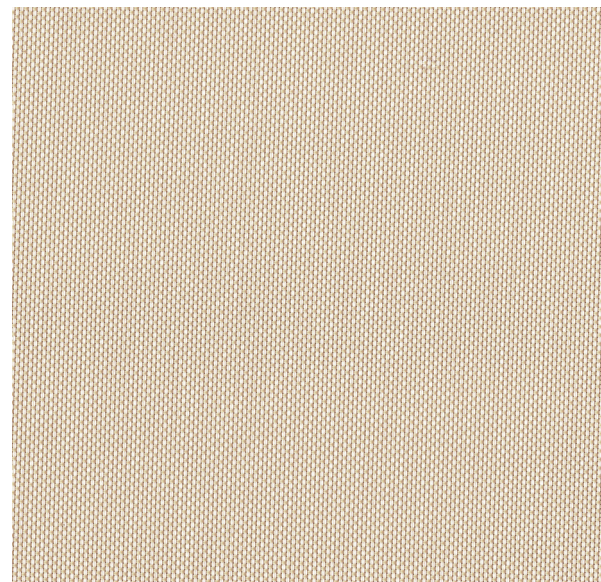
## Cleaning

Perspective fabrics can be wiped clean. See manufacturers instructions. Tested in accordance with BS EN 26330:1994 method 7a.

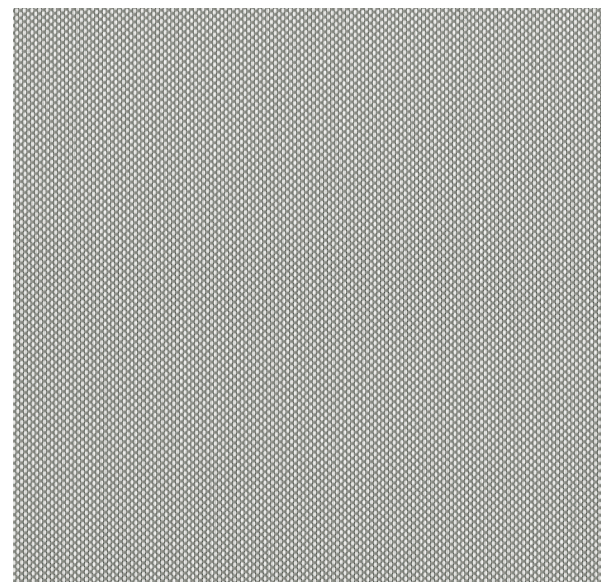
## Properties



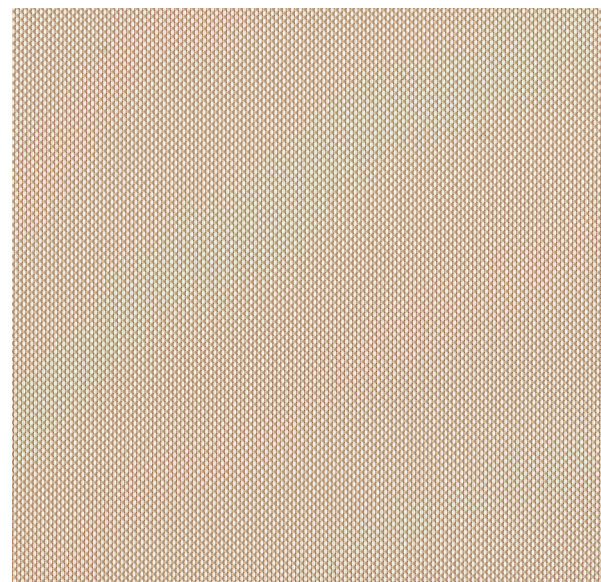
Arctic White



Tuscan Beige



Windspray Grey



Desert Sand



Shale Grey



Black Iron

