

Pictured: Matrix Seagrass



BLOCKOUT

## MATRIX

ROLLER, VERTICAL AND PANEL BLINDS

Matrix is a flame retardant textured weave with a tonal lustrous yarn.

Available in 4 colourways, Matrix is a blockout, Greenshield fabric.

Composition: 100% Polyester

Fabric Width: 2.10m (82.7")

Weight: 431g/m<sup>2</sup> (12.7oz/yd<sup>2</sup>)



## MATRIX

SOLAR, OPTICAL AND COLOUR FASTNESS PROPERTIES

	SOLAR			OPTICAL			UV block	SC	CF	DIM out	G VALUE				G TOT
	T <sub>s</sub>	R <sub>s</sub>	A <sub>s</sub>	T <sub>o</sub>	R <sub>o</sub>	A <sub>o</sub>					SG	DG	TG	DG LE	
Flax	0	74	26	0	82	18	100	0.29	5	5	0.36	0.38	0.36	0.37	0.06
Calico	0	74	26	0	82	18	100	0.29	5	5	0.36	0.38	0.36	0.37	0.06
Hessian	0	74	26	0	82	18	100	0.29	5	5	0.44	0.46	0.40	0.42	0.06
Sea Grass	0	74	26	0	82	18	100	0.29	5	5	0.31	0.34	0.34	0.34	0.06

T: % Transmittance  
R: % Reflectance  
A: % Absorption

UV Block: the % of UV light blocked by the fabric  
SC: Shading Co-efficient  
CF: Colour Fastness

Dim out:  
1 = High light penetration  
4 = Low light penetration  
5 = Blockout

G Value: amount of heat transmitted through the glazing  
SG: Single Glazed

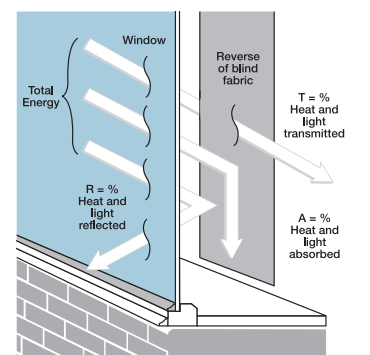
DG: Double Glazed  
TG: Triple Glazed  
DG LE: Double Glazed Low Emissivity.

GTOT: The amount of heat transmitted through the combination of glass and solar shading.

**SOLAR GAIN:** The amount of heat increase resulting from solar energy entering a room. It is the total of three separate parts - the amount of energy transmitted directly into the room, the energy which is absorbed by the blind and the proportion of energy which is absorbed by the window.

**SHADING CO-EFFICIENT:** The solar heat gain with the blind at the window divided by the solar heat gain with no blind at the window. The lower the shading co-efficient, therefore, the higher the efficiency of the fabric. The test results in the table above have been achieved using a single 6mm glass glazing system.

**G TOT:** When the G-value (a measure of total solar energy that passes through the glazing system and the blind fabric) is combined with the value of the shading.

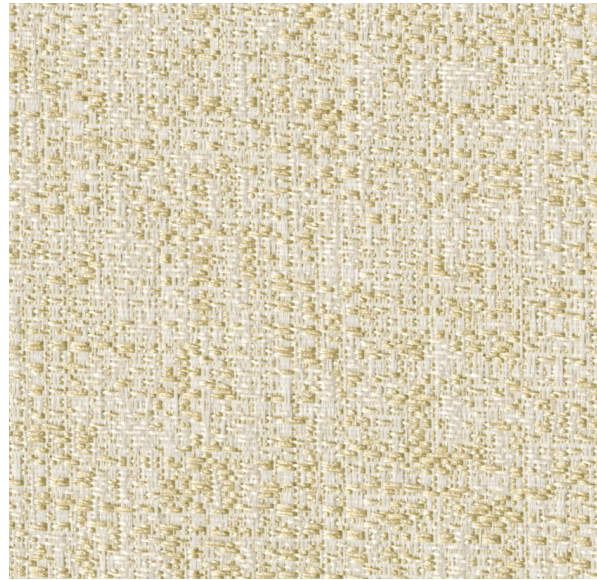


JB Commercial Shadings  
Unit B The Foundry  
Russell Gardens  
Wickford  
Essex

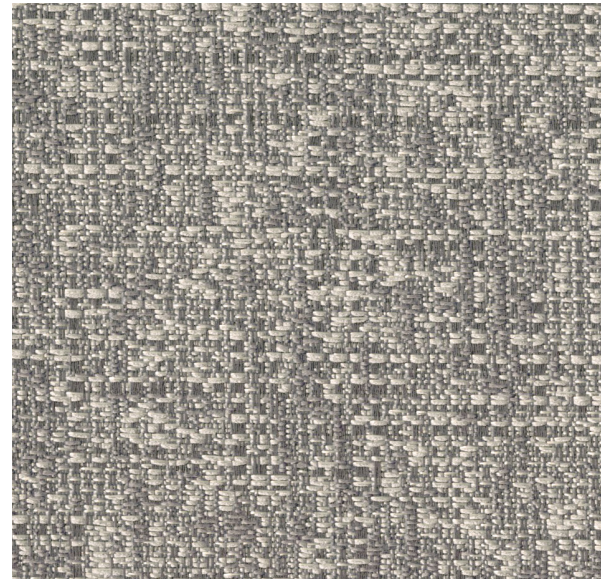


CI/SfB 1976 reference by SfB Agency

(76.7) X



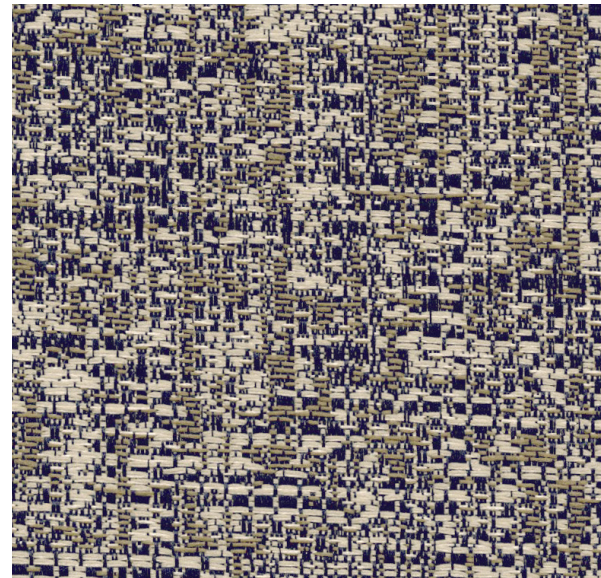
Calico



Flax



Hessian



Sea Grass

# MATRIX

## Fabric Composition

100% polyester

## Fabric Width

2.10m (82.7")

## Fabric Weight

431g/m<sup>2</sup> (12.7oz/yd<sup>2</sup>)

## Flammability Standards

Matrix meets FR standard BS 5867 Part 2 Type B. Further information is available on request.

## Colour Fastness

Tested in accordance with BS EN ISO 105-B01:1999

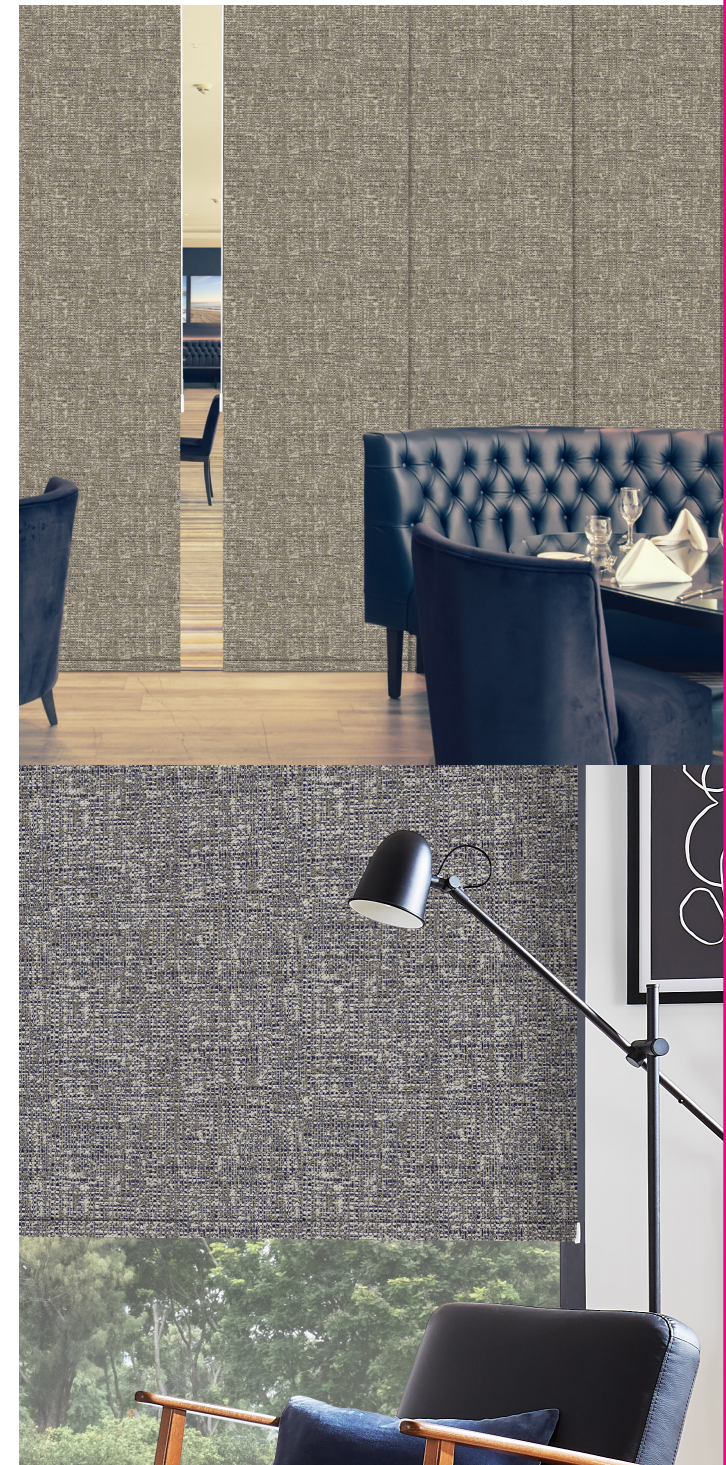
## Cleaning

Matrix fabrics are no clean. See manufacturers instructions. Tested in accordance with BS EN 26330:1994 method 7a.

## Greenshield

Fabrics featuring Greenshield have been tested to confirm no harmful VOC's or hazardous substances will be released into the environment in quantities that are recognised as potentially dangerous to occupants of dwellings or buildings.

## Properties



Please note: Blockout fabric does not create a fully blackout blind, there will be lightstrike at the edge of the blind.